

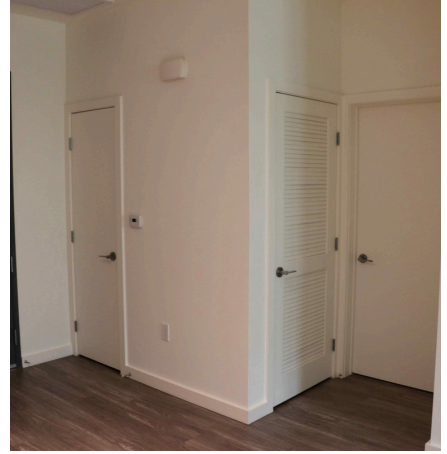


HALEY

RESIDENTIAL DOORS CRAFTING WOOD DOORS SINCE 1893

**HALEY
PRODUCT
OFFERING**

www.HaleyBros.com



FEATURES	WOOD VENEER	MOLDED PANEL	PAINTABLE SURFACE & EMBOSSED HARDBOARD
SURFACE MATERIAL	Rotary Natural Birch, Plain Sliced Red Oak	Molded-Raised and Flat Panel <small>*ADA Bottom Rail available in some designs</small>	Paint Grade Birch, Primed Hardboard and Embossed Hardboard
FACE GRADE	Grade A Book and Running Match	Residential	Residential
MINIMUM SIZE <small>*Call for size options</small>	*1'6" x 5'0"	*1'6" x 5'0"	*1'6" x 5'0"
MAXIMUM SIZE	4'0" x 8'0"	3'0" x 8'0"	4'0" x 8'0"
THICKNESS	1 3/8" or 1 3/4"	1 3/8" or 1 3/4"	1 3/8" or 1 3/4"

OPTIONS

FIRE RATING <small>CATEGORY: A, B OR NP</small>	20-45-60-90	20-45-60 <small>*Select designs available</small>	20-45-60-90
*LITES AND **LOUVERS <small>**Cutouts only</small>	✓		✓
BIFOLDS	6'0" x 8'0"	6'0" x 8'0"	6'0" x 8'0"
LOUVER DOORS	#402: Louver/Louder	#402: Louver/Louder	#402: Louver/Louder
WARRANTY	One-year Limited	One-year Limited	One-year Limited

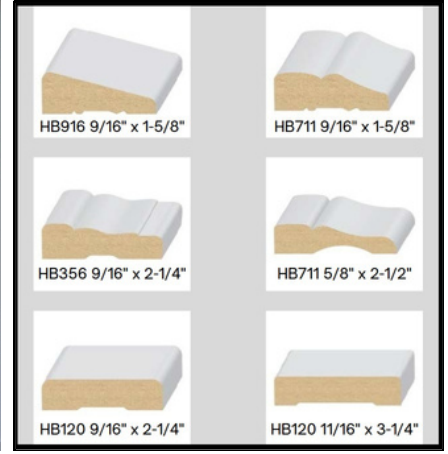


HALEY

PREFIT JAMB SYSTEM CRAFTING WOOD DOORS SINCE 1893

**HALEY
PRODUCT
OFFERING**

www.HaleyBros.com



FEATURES

INTERIOR JAMBS

INTERIOR JAMBS

INTERIOR CASING

*Call for non-stock options

MATERIAL

Medium Density Fiberboard

Finger Joint Pine

Medium Density Fiberboard

*Call for Fingerjoint options

FINISH

Primed

Primed

Primed

STOCK WIDTH

*Call for custom size options

4-9/16", 4-3/4", 4-7/8", 5",
5-1/4", 6-3/4", 7-1/4", 8", 11-1/4"

4-9/16", 4-3/4", 4-7/8", 5"

1-5/8" - 3-1/4"

Determined by profile

MAXIMUM SIZE

*Call for custom size options

6'0" W x 8'0" H

6'0" W x 8'0" H

6'0" W x 8'0" H

STOP SETTING

1 3/8" or 1 3/4"

1 3/8" or 1 3/4"

Not applicable

OPTIONS

FIRE RATING

Non-Rated

Non-Rated

Non-Rated

MACHINING



Not applicable

HINGE FINISH

DEFAULT: US-3/4
OPTIONS: US-1D, US-15, US-26, US-26D

HINGE SIZE

DEFAULT: 3-1/2" with 5/8" radius
OPTIONS: 3-1/2" & 4" with 1/4" radius, 5/8" radius, or square corner

WARRANTY

One-year Limited

One-year Limited

One-year Limited